



Jamboree

Engaging and Housing Chronically Homeless: How Orange County Plans to End Homelessness

Helen T. Cameron
Director, Supportive Housing



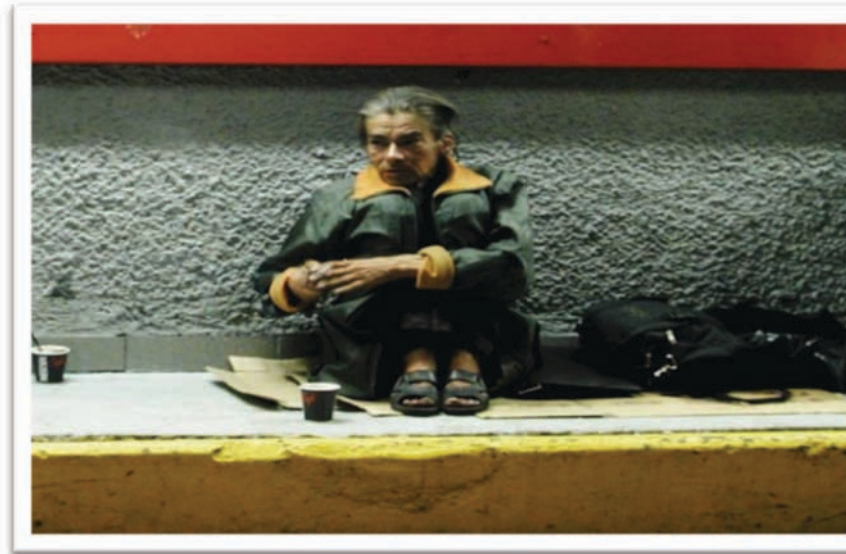


2015 Point in Time

2015 Point in Time Count Results

Total Homeless
Persons

2013	2015	% Difference
4251	4452	5%



Mental Health Services Act (MHSA) Housing Program

- Goal 1: Create 185 units for clients with serious and persistent mental illness.
- Goal 2: Ensure success for residents = stability



Who resides in MHSA units?

Adults • Older Adults • TAY





Jamboree

What is Permanent Supportive Housing?

- Decent, safe and affordable community based-housing that provides tenants with the rights of tenancy under state and local landlord tenant laws and is linked to voluntary and flexible support and services designed to meet tenants' needs and preferences.



Jamboree

What is Permanent Supportive Housing?

- Permanent supportive housing makes housing affordable to someone on SSI (either through rental assistance or housing development)
- It provides sufficient wraparound supports to allow people with significant support needs to remain in the housing they have chosen.



Jackson Aisle, Midway City

- 29 apartments for homeless mentally ill clients
- Onsite case & property manager
- Community room for social events and group meetings
- Residents pay less than 30% of income towards rent





Doria Apartment Homes, Irvine

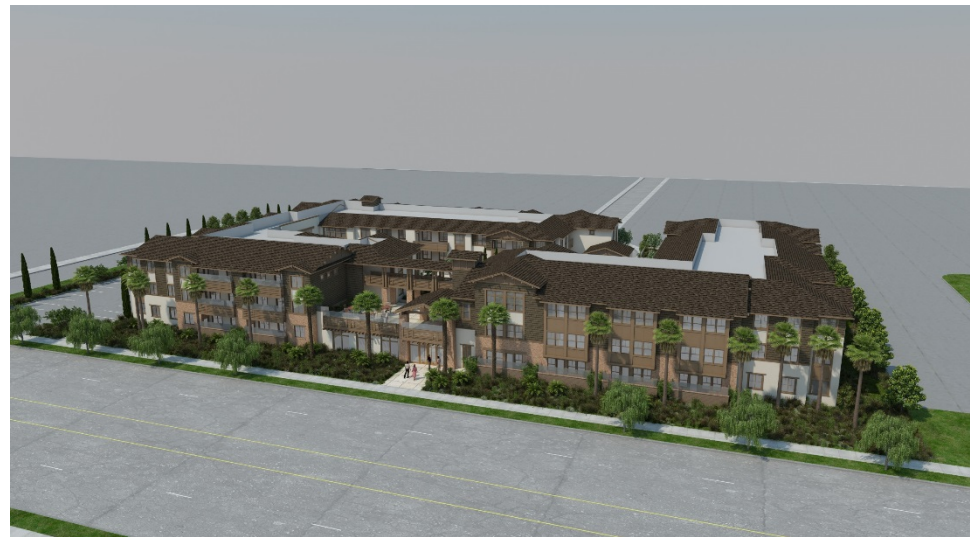
- Located in the city of Irvine
- 20 one and two bedroom units
- Housing for families with an adult member with mental illness
- Onsite Resident Services





Lincoln Avenue Apartments, Anaheim *(opening Spring 2016)*

- 15 one bedroom apartments for homeless mentally ill clients
- Onsite case & property manager
- Community room for social events and group meetings
- Residents will pay less than 30% of income towards rent
- 48 Project Based Vouchers for families with children considered homeless by Anaheim schools





Diamond Apartment Homes, Anaheim

- Onsite Resident Services
- Located in the city of Anaheim
- 25 one and two bedroom units
- Housing for families with an adult member with mental illness





Jamboree

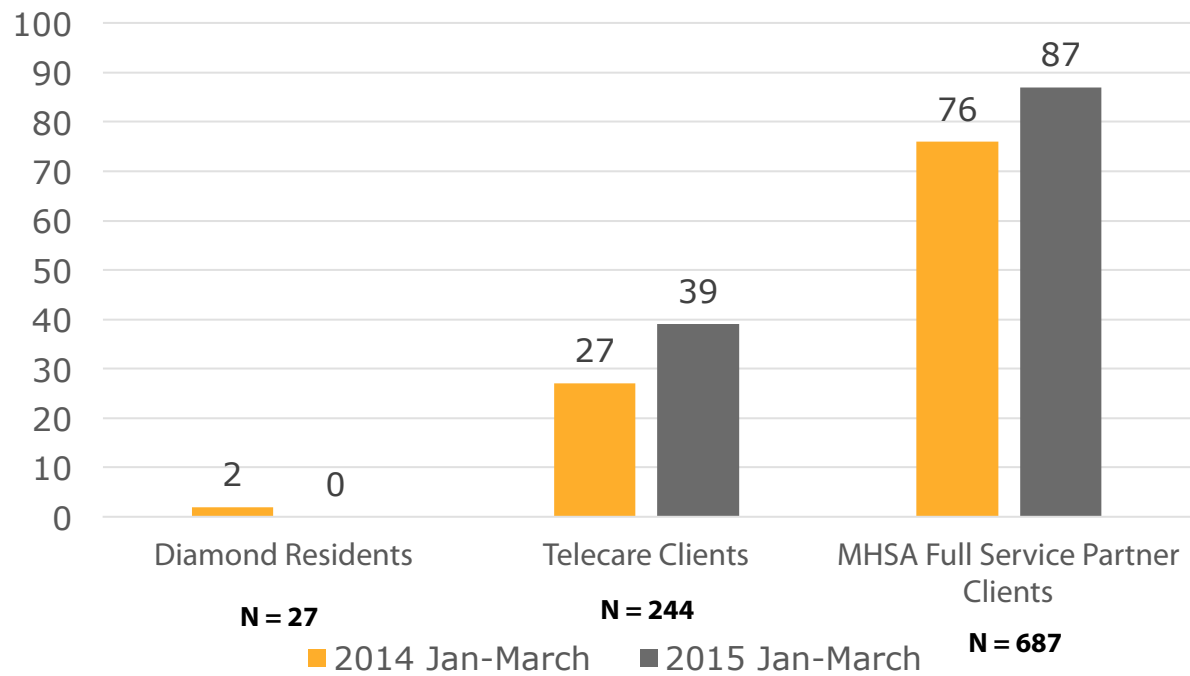
- 6 Houses – 29 residents
- 3 Apartment Communities – 82 residents (and growing)
- We are providing housing for over 140 mentally ill and formerly homeless residents of Orange County.





Jamboree

Psychiatric Hospitalizations



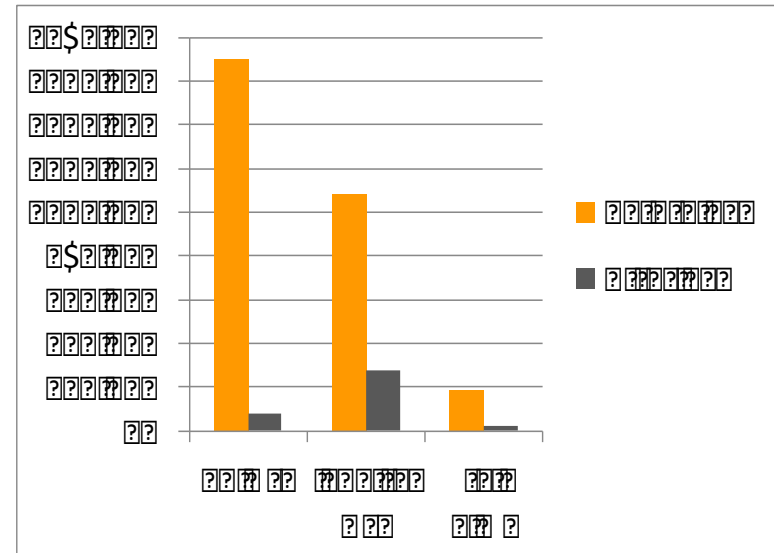
Source data: TAO Diamond Aisle Outcomes Report



Jamboree

Outcomes

- Based on Portland, ME
- Show reduction in ER Use
- Shelter Use
- Jail Time





Jamboree

Outcomes

- Diamond Aisle Outcomes Report
- 88% of residents maintained housing with needed services in the year. 100% in the first quarter.
- 69% were regularly engaged in employment, volunteer, education or on site meaningful activities during the year.
- 73% agreed that they had greater self determination and ability to deal more effectively with daily problems.